



## Cut, Place & Weld

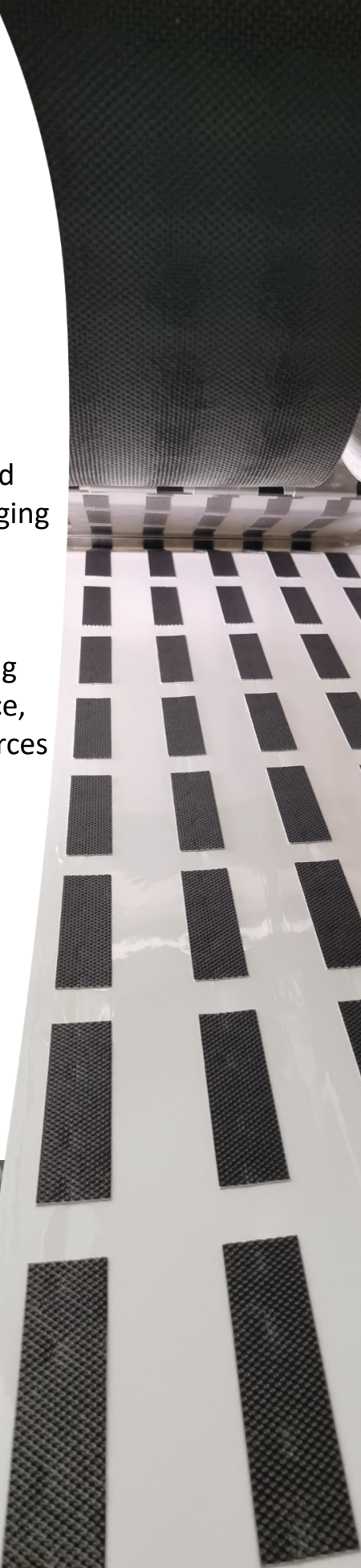
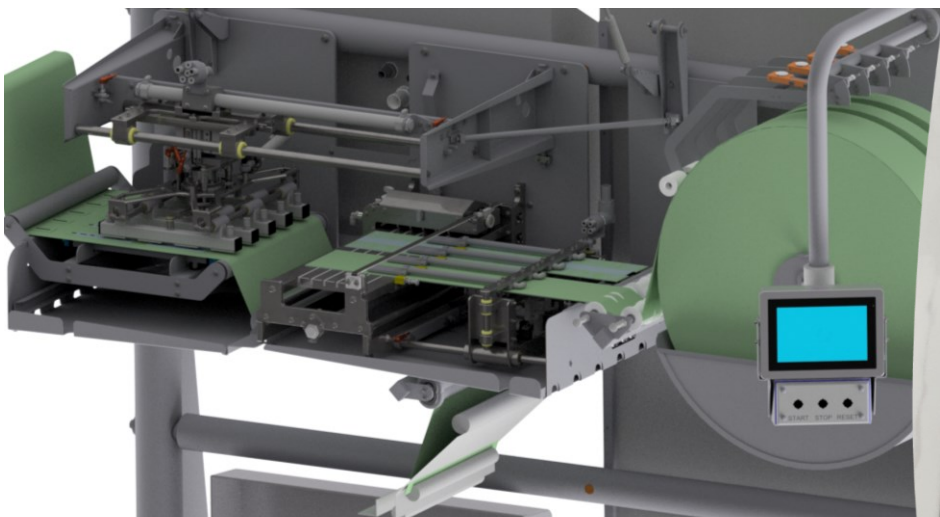
### Applicator for absorbent pads in the food industry

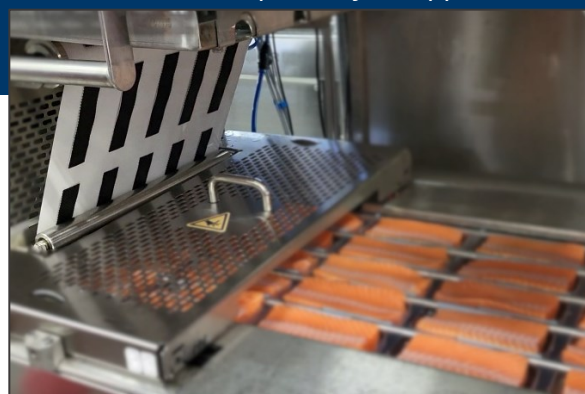
Introducing a versatile cut, place & weld module designed for seamless integration with your thermoforming packaging machines.

The pads are precision-cut from a rolls and automatically sealed onto the top film, requiring only a minimal working surface. The module is easy to clean and low maintenance, providing a reliable solution that optimizes human resources and increases product quality and production yield.

#### Features:

- ✦ Places up to 160 pads per minute
- ✦ High speed, fully automated machinery
- ✦ Supports multiple pad configurations
- ✦ Utilizes roll-fed material
- ✦ Easy maintenance
- ✦ Supports food grade cleaning





The applicator efficiently cuts multiple pads and seamlessly transfers them to the top-film in a continuous motion. This process is facilitated by smoothly moving the pads from the cutting station to the welding station. By changing a few size parts to make pads of a different length, enables to produce various products on the same production line

The compact design of the cut, place & seal applicator ensures easy integration into any existing thermoforming packaging machine. Powered solely by pneumatics and constructed with durable stainless steel, it is a dependable, low-maintenance unit suitable for food-safe environments.

### Main Benefits:

- ☀ Cost savings by replacing manual operations
- ☀ Cost savings with no need for pre-cut absorbent pads
- ☀ Cost saving as yield improves due to an exact placement of each pad
- ☀ Cost savings due to less bespoke pre-cut pads to manage/stock
- ☀ Easy integration into existing production lines
- ☀ Improved food safety by limiting manual handling of pads

### ***The Fimtech promise***

*In close cooperation we design the perfect fit solution for your existing production and product mix.*

*Then we build, program and test before installation. Ensuring a limited stop in production, guaranteeing successful operations forward.*

